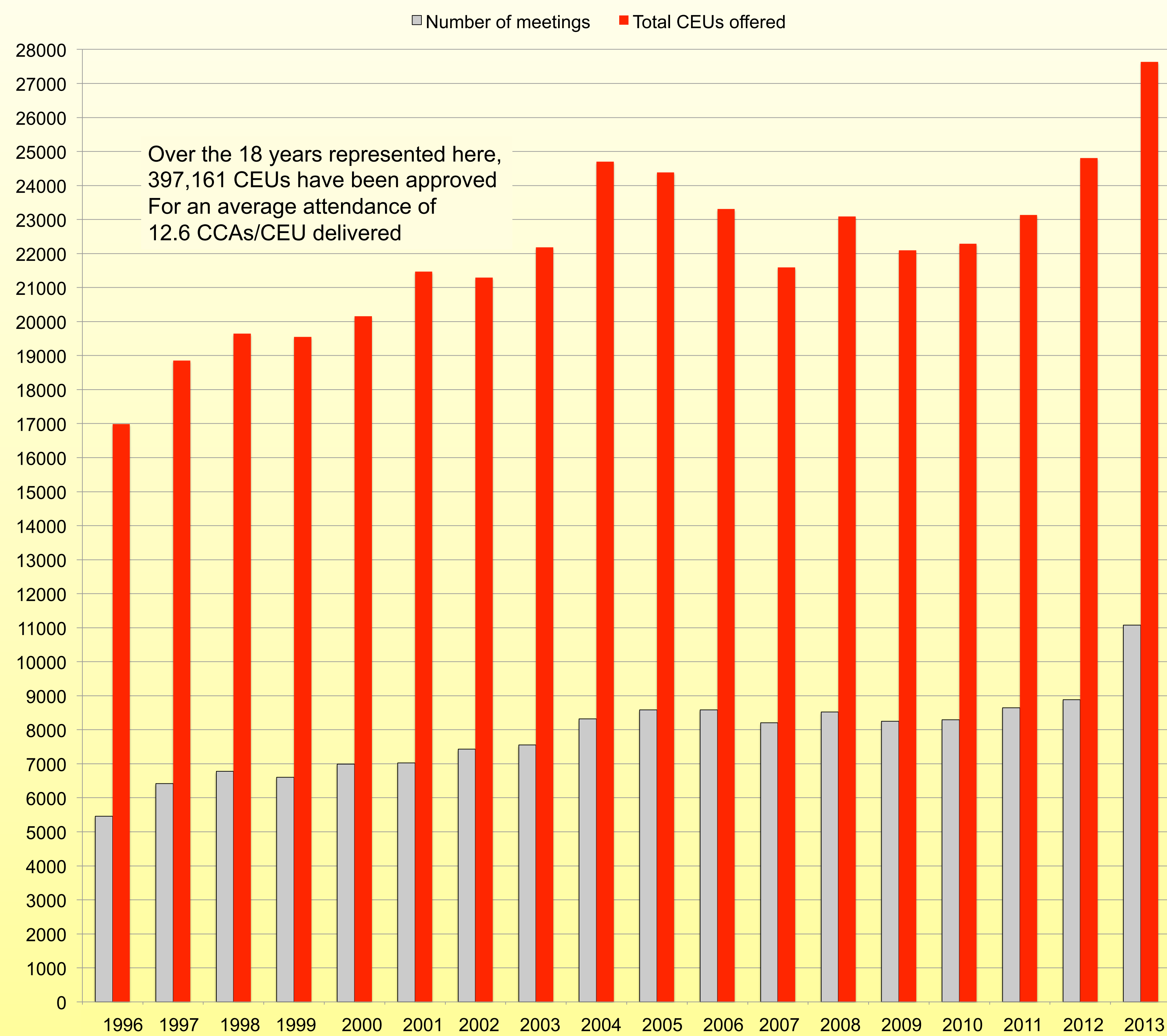




20 Years of Continuing Education for Certified Crop Advisers

Harold D. Watters*, Ohio State University - Extension Field Specialist Agronomic Systems, Bellefontaine, OH
and Luther Smith, American Society of Agronomy - Director of Certification Programs, Madison, WI

Chart 1. Program CEUs offered over time by number of meetings and total CEUs.



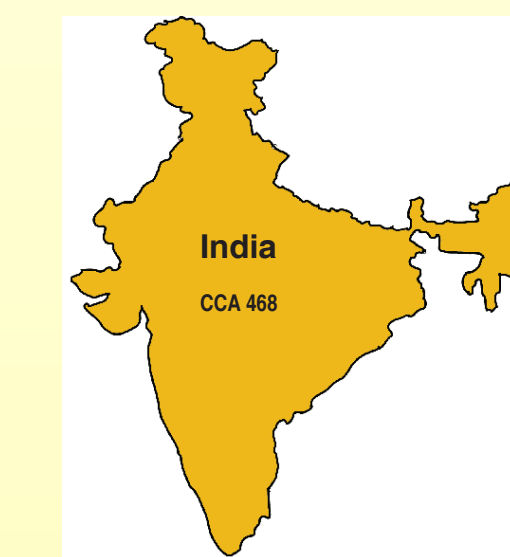
Certified Crop Advisers (CCA) and Certified Professional Agronomists (CPAg) require continuous education to maintain their certification:

Continuing education activities are measured in CEUs, which are defined as the equivalent of one hour of quality contact time in training or other qualifying activity on such topics as contained in or related to the CCA Educational Areas:

- Nutrient Management (NM)
- Soil & Water management (SW)
- Pest Management (PM)
- Crop Management (CM)
- Professional Development (PD)

Two-year CEU cycles begin on January 1 of each year. The continuing education requirements for maintaining certification are:

1. A minimum of 40 CEUs (40 for the CCA, 50 CEUs for the CPAg) every two years with a minimum of five CEUs in each of the four competency areas. Please note: The fifth category, Professional Development, is NOT a required category for the CCA, but is for the CPAg.
2. A minimum of 20 CEUs must be pre- or post-board approved in each two-year cycle.
3. Applicants may begin accumulating CEUs on the day their CCA certificate is dated. CEUs obtained on or after the date on the certificate, but prior to January 1, will count towards the first year.
4. A maximum of 20 CEUs may be earned every two years as Board approved self-study CEUs.



Numbers represent total certified
Total CCAs 13,330
Total CPAGs 582

ARCPACS?

Created as a certifying registry within the Tri-Societies - ASA, CSSA, SSSA - in 1977.

- Certifications for CPAg, CPCS, CPSS and ARCPACS became part of ASA in 1983
 - The ASA board approved development of a Certified Crop Adviser category in August 1991
 - CCA became a separate budget center in 1995
 - Canada joined in 1998, to become a part of the International Certified Crop Adviser program.
- To complete the circle – CPAg became part of the CCA program in 2012.

2014 CCA & CPAg Program Participants

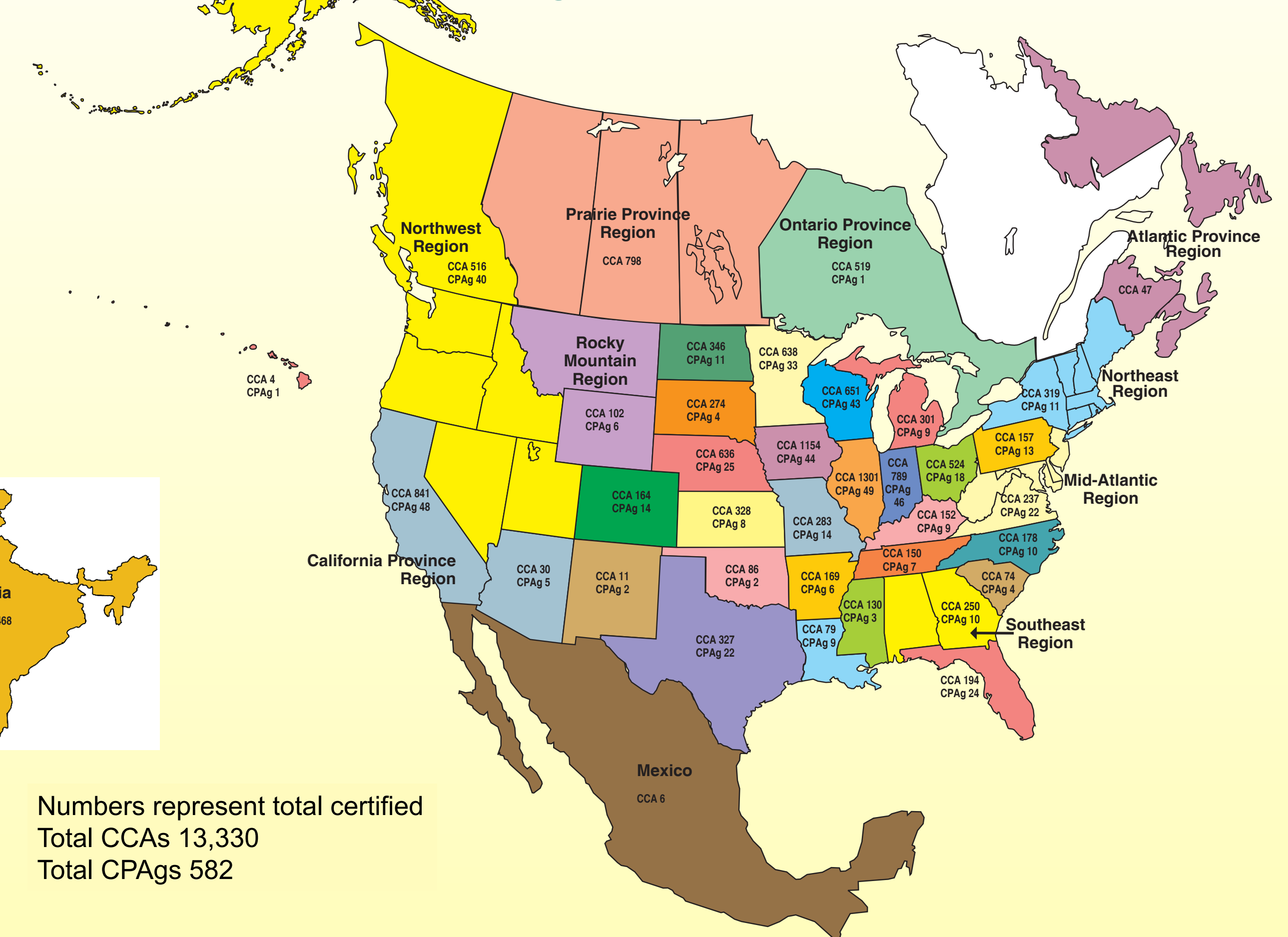


Chart 2. CEU by educational area by year – for “Private” offerings – Program wide

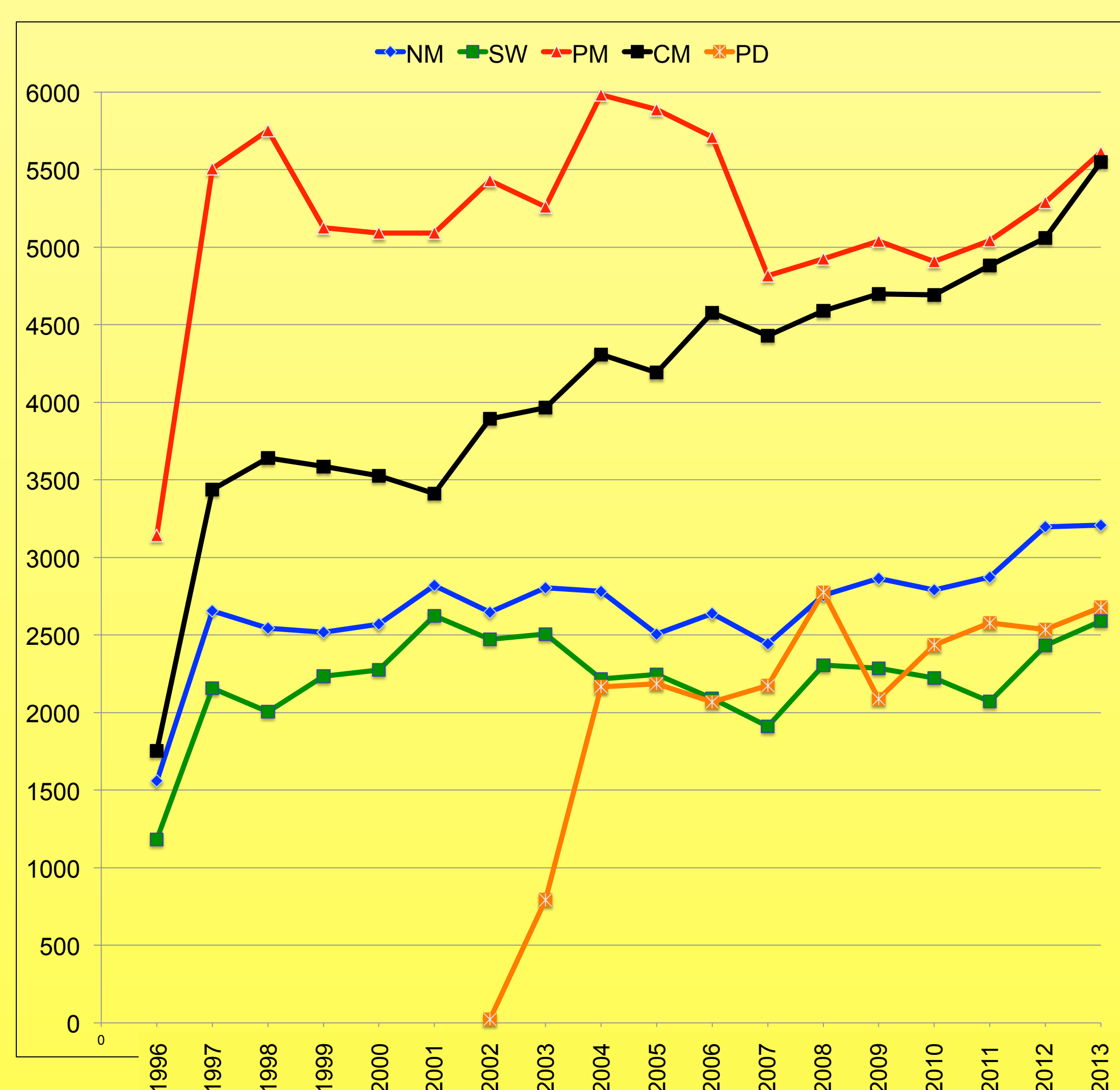
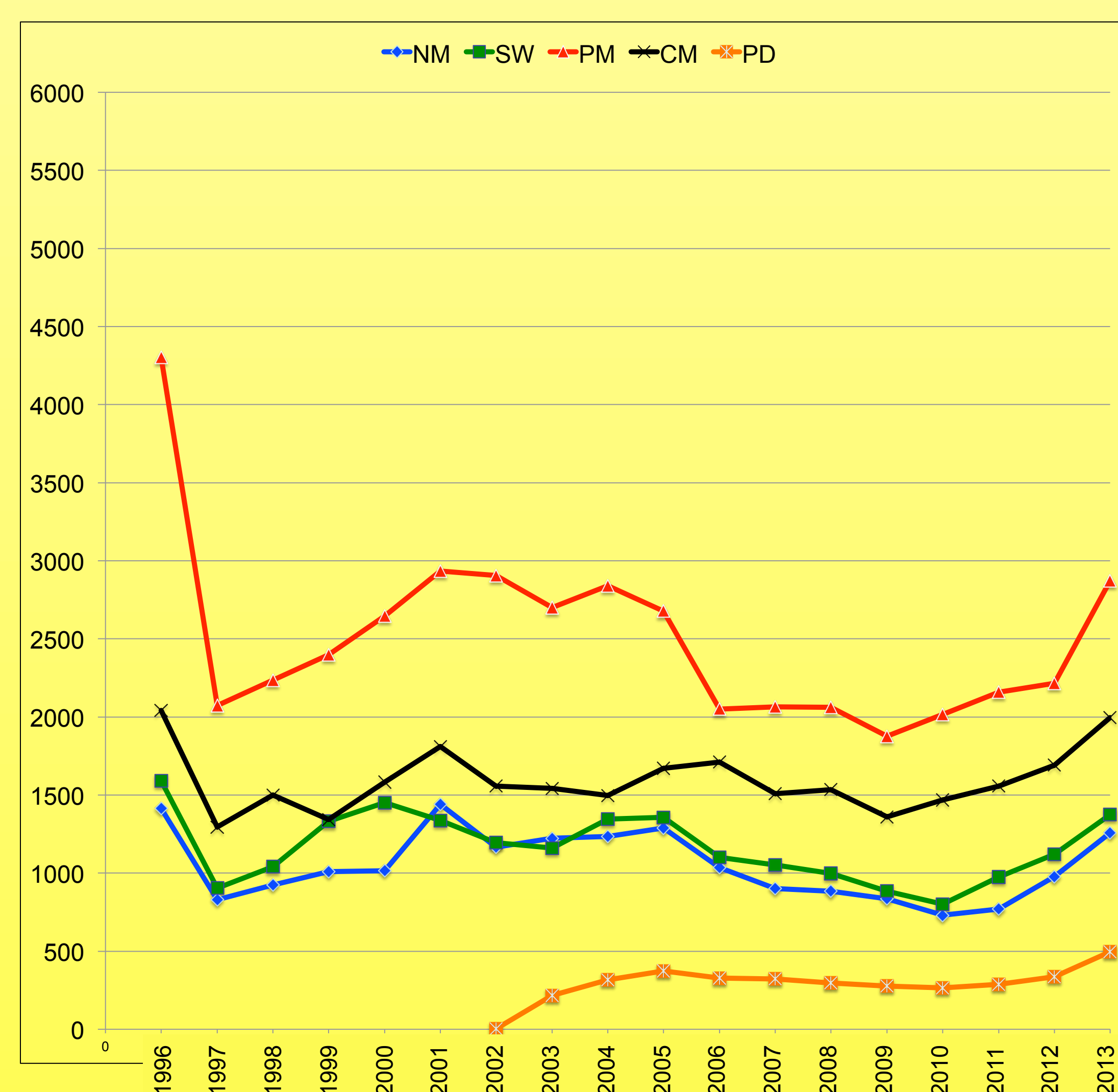


Chart 3. CEU by educational area by year – for “University” offerings – Program wide



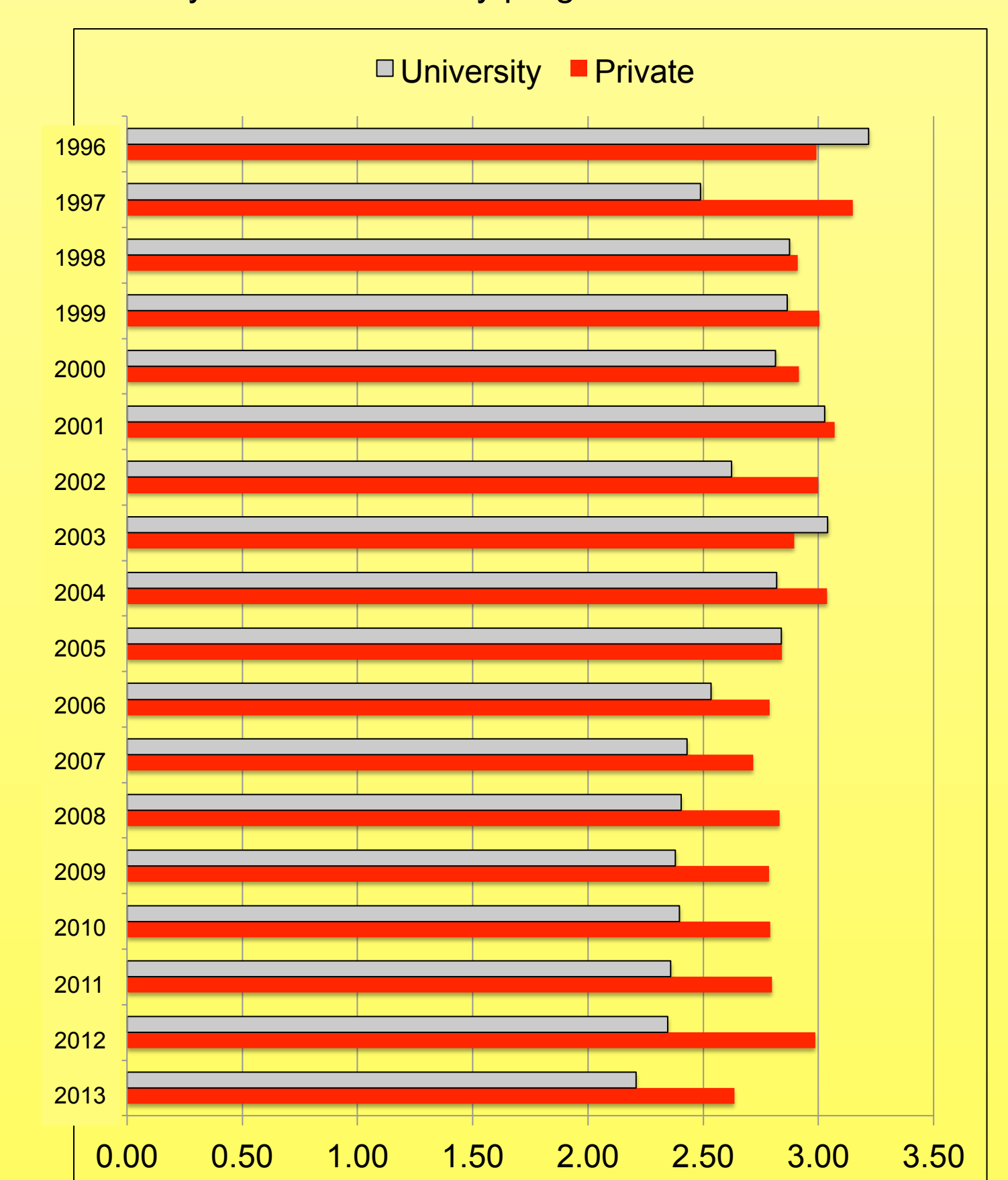
Educational meetings and CEUs offered to CCAs are increasing over time as shown in Chart 1. Industry or “private entity” education is increasing more so than “university” programs; seen in Chart 2 and 3. Early in the CCA program history, PM were the highest offered courses, now CM equals that educational area for CEUs offered. PM and CM CEUs often come from industry agronomists rather than university professors.

Nutrient management (NM) and Soil & Water (SW) are often cited as of increasing need but education programs including this material have been level over time – with about 1/2 of the material coming from universities.

Professional Development (PD) added in 2002, now equals NM and SW in CEUs offered in industry programs, with many sessions identified as “sales” or customer development training. University programs rarely offer PD CEUs.

Chart 4, shows that university programs have gotten shorter over time. Programs today are often 1/2 day in length.

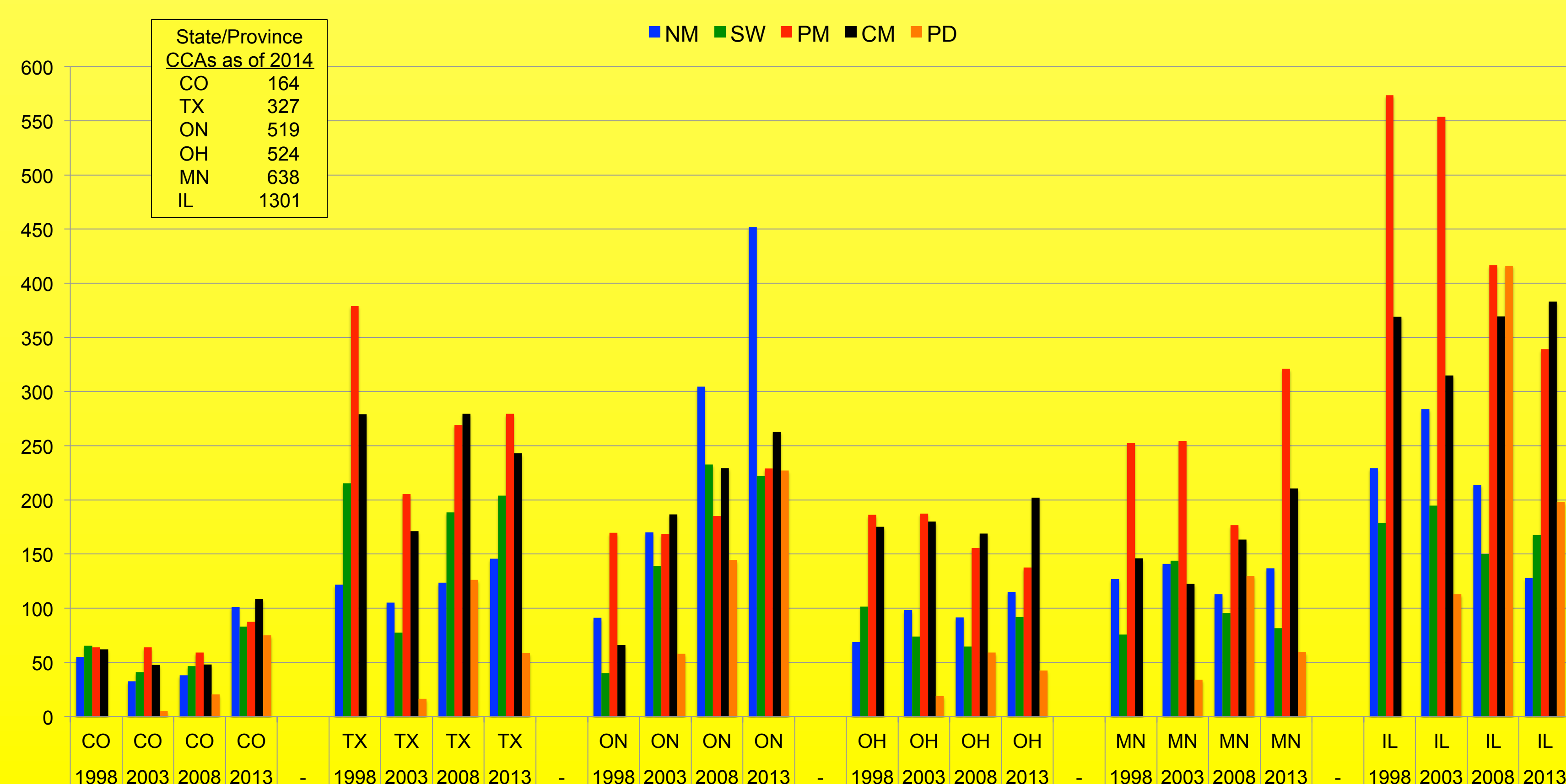
Chart 4. Ratio of CEUs per meeting across years for university vs. non-university programs.



QR presentation code including contact information



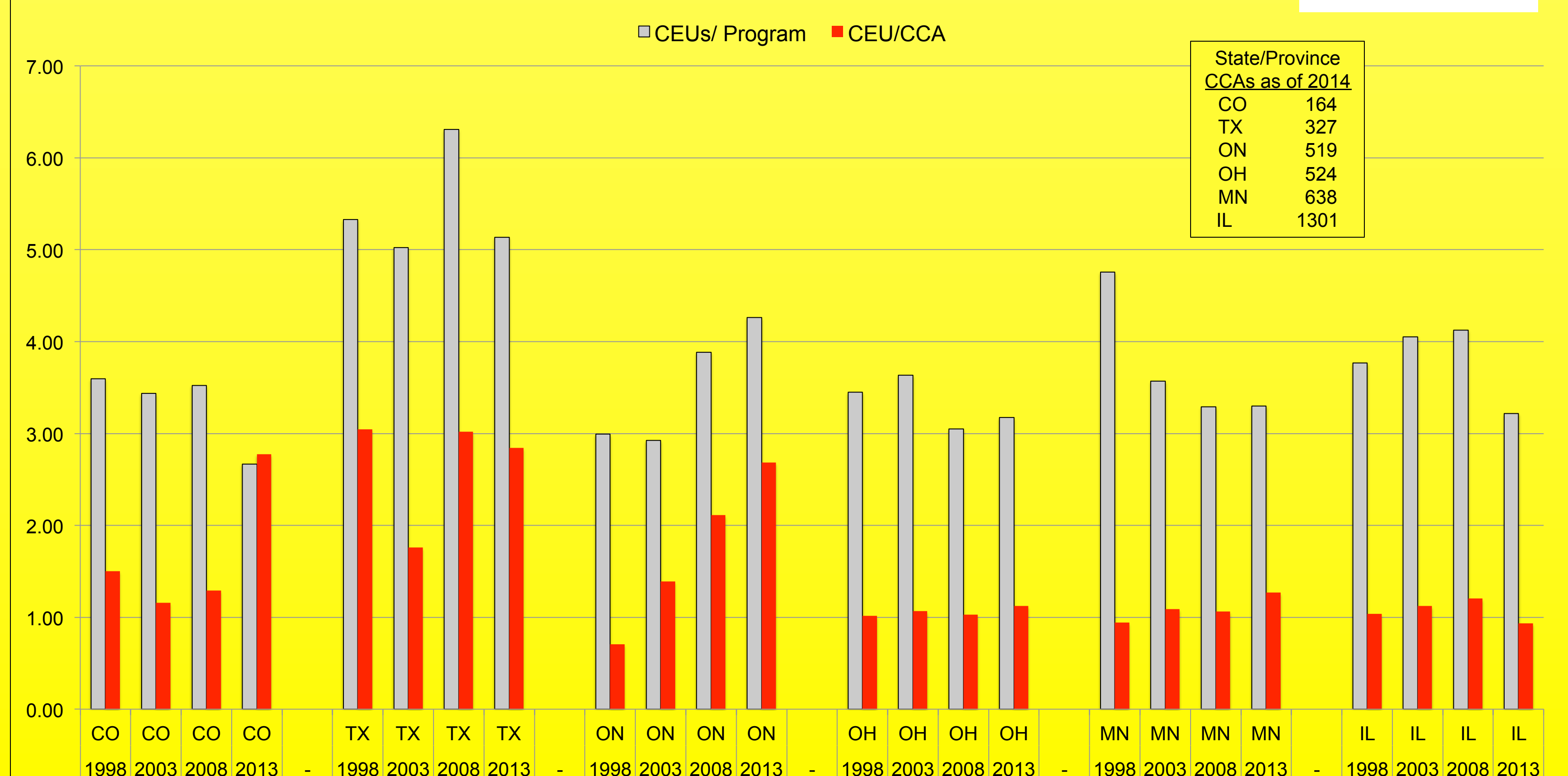
Chart 5. CEU study area by selected state/province over a fifteen year period.



Educational offerings vary by state or region as shown in Charts 5 & 6. The trend continues with more CEUs offered over time.

- Five geographic areas were chosen to look at a little more closely for program differences.
- Colorado (small) and Illinois (large) were chosen to show the range and four “average” state/province areas the middle.
- In the middle there is a lot of variation between Ontario and Ohio even with nearly identical CCA numbers.
 - Ontario has greatly increased the NM offerings; Ohio will follow after our water quality concerns made national headlines this summer.
- Texas with large geography and few CCAs per square mile, offers a high number of CEUs per program, and has the highest offering of CEU per CCA of the five areas.
- Illinois has reduced its PM CEUs, now equal to its CM educational CEUs.

Chart 6. CEUs by program and CEU by CCA for selected state/province across 15 years.



*Presenting author and past chair of the ICCA Continuing Education Committee. For further information: watters.35@osu.edu, 937 604-2415 cell. Thanks for the assistance of Lacey Edwardson in retrieving this information from the Madison database.